



## SOGNO COLLECTION

Designed by Robert Semprini for Mastella Design, Sogno is a shower cubicle complete with shower tray with a smart minimalist line which creates an impalpable effect of lightness. The shower tray is completed by a wooden footboard with ribbing like a leaf, a theme which dominates the entire structure and also appears in the screen-printed patterns which embellish the methacrylate plate. [www.mastelladesign.it](http://www.mastelladesign.it) email: [mastella@mastelladesign.it](mailto:mastella@mastelladesign.it)

## Ligne Roset

Flax by Philippe Nigro. The entire structure – legs, seat, back and armrests – is made from an assembly of curved slats of solid walnut. On top sit soft cushions which ally springs, Bultex foam, polyester quilting and feathers. Occupying around 75cm<sup>2</sup> of space, the Flax is easy to accommodate and fits perfectly into interiors of all styles. Price: £1,732

Ligne Roset Edinburgh, Ocean Terminal, Ocean Drive, Leith EH6 6JJ, Tel: 0131 555 0100, [www.ligne-roset-edinburgh.co.uk](http://www.ligne-roset-edinburgh.co.uk)



*Montgomery curtains are offering Scottish Field readers 10% off any curtains from their ready made or made to measure ranges, available at stores throughout Scotland.*

*Quote SF04. Offer ends 30 September. Visit [www.montgomery.co.uk](http://www.montgomery.co.uk) for details*

**FIELD FORUM**  
POST YOUR INTERIORS TIPS  
AND TRICKS ON THE FORUM  
[WWW.SCOTTISHFIELD.CO.UK](http://WWW.SCOTTISHFIELD.CO.UK)



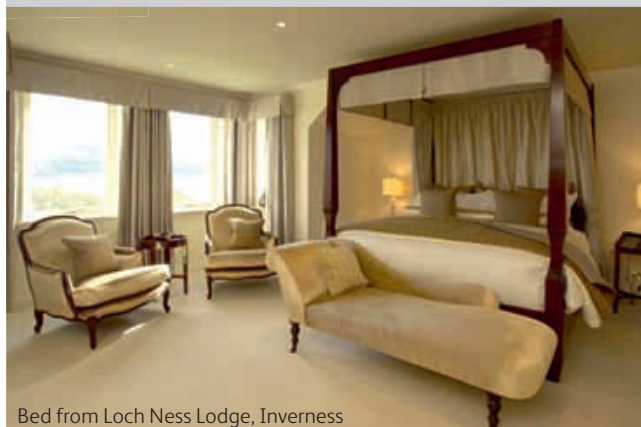
## Interiors Tip of the Month

### CARING FOR SOLID WOOD

Caring for handmade solid wood furniture is very important. It needs to be waxed with natural beeswax regularly. The traditional thick paste is best and should be applied lightly with a soft rag. A natural spray-on is quite adequate but a silicon spray is not suitable as it does not nourish the wood, but merely puts a slippery shiny surface on it.

Highly skilled furniture polishers can remove small marks and scratches but it is best to get a local polisher rather than attempt removing the mark yourself. Furniture should be kept away from sunlight as it will cause the wood to fade or shrink.

Stephen Edwards has been making furniture for 25 years in rural Hertfordshire. He produces wooden crafted four-poster beds and country furniture in traditional, contemporary and bespoke designs. [www.fourposterbed.co.uk](http://www.fourposterbed.co.uk)



Bed from Loch Ness Lodge, Inverness



## Arboreal

Specialising in producing mirrors using various hardwoods such as elm & oak, incorporating the natural edge of the tree plus any unusual features making each mirror unique. [www.arboreal-reflections.co.uk](http://www.arboreal-reflections.co.uk) 01592 756613



## Funky splashbacks

Bringing personality and flair into the home, the bespoke creations of innovative design company 'Funky Splashbacks' will instantly enhance and add character to its surroundings. Each glass splashback is hand painted and crafted to a unique brief, ensuring that every product is an original. Artist Jo Omar designs and produced each piece individually from her studio in Newbury. Combining colour, texture and pattern, the vivid splashbacks are ideally situated behind a cooker, or placed above a kitchen or bathroom sink. A great alternative to tiles, each splashback is tailored to fit. Tel: 01635 250701 [www.funkysplashbacks.com](http://www.funkysplashbacks.com)